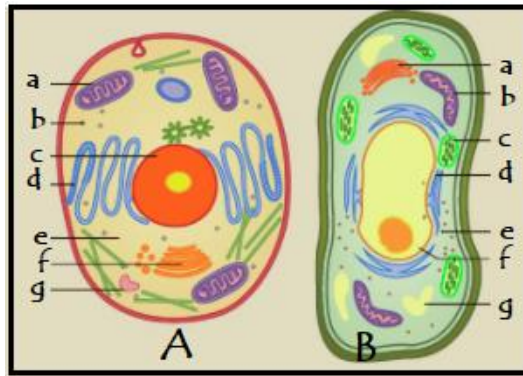


MINISTRY OF EDUCATION, HERITAGE AND ARTS
YEAR 11 BIOLOGY
REVISION WORKSHEET 3

Write the answers to the following questions in your exercise/activity books.

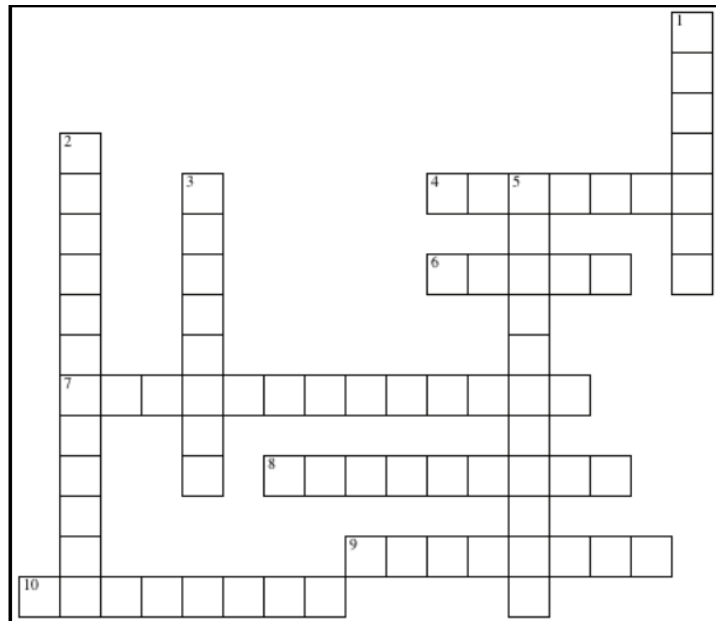
Cells

1. Write **two** differences between a plant and an animal cell. **(4 marks)**
2. a. Label the following diagrams of Cell A and B. Also name cells A and B. **(9 marks)**



Source: <https://amaisd.libguides.com/cells>

- b. Write the functions of parts a, c and f of Cell A, and c, d and f of Cell B. **(6 marks)**
3. Complete the crossword below using the clues provided: **(10 marks)**



Source: <https://www.education.com/download/worksheet/64453/life-science-crossword-plant-animal.pdf>.

Across

4. Stores nutrients and is generally much larger in plant cells than in animals **cells**
6. Processes and packages proteins and lipids in the cell
7. Provides the energy for the cell
8. Within the nucleus and produces ribosomes
9. Contains the enzymes necessary for digestion within the cell
10. Provides rigidity for the plant cell and is not found in animal cells

Down

1. Directs and controls all the other parts of the cell
2. The covering of the animal cell
3. Produces proteins and amino acids
5. Contains chlorophyll

The End